



STATE OF NORTH CAROLINA
DEPARTMENT OF TRANSPORTATION

ROY COOPER
GOVERNOR

January 10, 2024

J.R. "JOEY" HOPKINS
SECRETARY

ADDENDUM # 1

Contract No. DN01011
TIP No.: N/A
Federal Aid No.: State Funded
WBS Element: 14C.056135
County: Macon
Description: Grading, Paving, Drainage Big Bear Pen Rd (SR 1602), From Chestnut St (SR 1602) To Upper Lake Rd

Letting Date: January 23, 2024

Plan Holders

Content Summary: Revisions for: Mandatory Pre-Bid Conference Date, Fuel Price Adjustment, Price Adjustment - Asphalt Binder for Plant Mix, and Utilities By Others (UBO) plan sheet

The above contract has experienced the following revisions:

1. Replace the **Mandatory Pre-Bid Conference (Prequalifying To Bid)** provision **SPD 1-310**, on page **G-1**, with the attached revised provision.
2. Replace the **Fuel Price Adjustment** provision **SP1 G43**, on pages **G-5** and **G-6**, with the attached revised provision.
3. Replace the **Price Adjustment - Asphalt Binder For Plant Mix** provision **SP6 R25**, on page **R-1**, with the attached revised provision.
4. Replace the **Utilities By Others** plan sheet **UO-1**, with the attached revised plan sheet.

These revisions do not change bid items or the associated quantities.

There is no ebsx addenda file associated with this addendum.

Thank you for your attention to this matter.

Mailing Address:
NC DEPARTMENT OF TRANSPORTATION
DIVISION OF HIGHWAYS - DIVISION 14
253 WEBSTER ROAD
SYLVA, NC 28779


Telephone: (828) 586-2141
Fax: (828) 586-4043
Customer Service: 1-877-368-4968

Location:
253 WEBSTER ROAD
SYLVA, NC 28779

Website: www.ncdot.gov

If you have any questions, please contact the Division Proposal Engineer at (828) 586-2141.

Sincerely,

DocuSigned by:

29BD93927CF24F6...

Jeanette L. White, P.E.
Division 14 Project Team Lead

PROJECT SPECIAL PROVISIONS**GENERAL****MANDATORY PRE-BID CONFERENCE (Prequalifying To Bid):**

(7-18-06) (Rev. 3-25-13)

SPD 1-310

In order for all prospective bidders to have an extensive knowledge of the project, all prospective bidders shall attend a mandatory pre-bid conference at

**January 18, 2024
1:00 PM**

Location:

**NCDOT Division 14, District 3 Office
191 Robbinsville Road
Andrews, NC 28901**

Point of Contact:

**Andy Russell
(828) 321 – 4105
jarussell@ncdot.gov**

The pre-bid conference will include a thorough discussion of the plans, contract pay items, special provisions, etc.

Only bidders who have attended and properly registered at the above scheduled pre-bid conference and who have met all other prequalification requirements will be considered prequalified to bid on this project. A bid received from a bidder who has not attended and properly registered at the above scheduled pre-bid conference will not be accepted and considered for award.

Attendance at the pre-bid conference will not meet the requirements of proper registration unless the individual attending has registered at the pre-bid conference in accordance with the following:

- (A) The individual has signed his name on the official roster prior to the above noted time for the beginning of the conference.
- (B) The individual has written in the name and address of the company he or she represents.
- (C) Only one company has been shown as being represented by the individual attending.
- (D) The individual attending is an officer or permanent employee of the company they are representing.

Any individual arriving after the official roster has been received by the Engineer will not be eligible to bid. Attendance at any prior pre-bid conference will not meet the requirement of this provision.

NO MAJOR CONTRACT ITEMS:

(2-19-02) (Rev. 8-21-07)

104

SP1 G31

None of the items included in this contract will be major items.

SPECIALTY ITEMS:

(7-1-95)(Rev. 1-16-24)

108-6

SP1 G37

Items listed below will be the specialty items for this contract (see Article 108-6 of the *Standard Specifications*).

Line #	Description
24-45	Erosion Control

FUEL PRICE ADJUSTMENT:

(11-15-05)(Rev. 1-16-24)

109-8

SP1 G43

Page 1-82, Article 109-8, FUEL PRICE ADJUSTMENTS, add the following:

The base index price for DIESEL #2 FUEL is \$ **2.7592** per gallon. Where any of the following are included as pay items in the contract, they will be eligible for fuel price adjustment.

The pay items and the fuel factor used in calculating adjustments to be made will be as follows:

Description	Units	Fuel Usage Factor Diesel
Unclassified Excavation	Gal/CY	0.29
Borrow Excavation	Gal/CY	0.29
Class IV Subgrade Stabilization	Gal/Ton	0.55
Aggregate Base Course	Gal/Ton	0.55
Sub-Ballast	Gal/Ton	0.55
Erosion Control Stone	Gal/Ton	0.55
Rip Rap, Class	Gal/Ton	0.55
Asphalt Concrete Base Course, Type _____	Gal/Ton	0.90 or 2.90
Asphalt Concrete Intermediate Course, Type _____	Gal/Ton	0.90 or 2.90
Asphalt Concrete Surface Course, Type _____	Gal/Ton	0.90 or 2.90
Open-Graded Asphalt Friction Course	Gal/Ton	0.90 or 2.90
Permeable Asphalt Drainage Course, Type _____	Gal/Ton	0.90 or 2.90
Sand Asphalt Surface Course, Type _____	Gal/Ton	0.90 or 2.90
Ultra-thin Bonded Wearing Course	Gal/Ton	0.90 or 2.90
Aggregate for Cement Treated Base Course	Gal/Ton	0.55
Portland Cement for Cement Treated Base Course	Gal/Ton	0.55
> 11" Portland Cement Concrete Pavement	Gal/SY	0.327
Concrete Shoulders Adjacent to > 11" Pavement	Gal/SY	0.327
9" to 11" Portland Cement Concrete Pavement	Gal/SY	0.272
Concrete Shoulders Adjacent to 9" to 11" Pavement	Gal/SY	0.272
< 9" Portland Cement Concrete Pavement	Gal/SY	0.245
Concrete Shoulders Adjacent to < 9" Pavement	Gal/SY	0.245

For the asphalt items noted in the chart as eligible for fuel adjustments, the bidder may include the *Fuel Usage Factor Adjustment Form* with their bid submission if they elect to use the fuel usage factor. The *Fuel Usage Factor Adjustment Form* is found at the following link:

<https://connect.ncdot.gov/letting/LetCentral/Fuel%20Usage%20Factor%20Adjustment%20Form%20-%20Starting%20Nov%202022%20Lettings.pdf>

Select either 2.90 Gal/Ton fuel factor or 0.90 Gal/Ton fuel factor for each asphalt line item on the *Fuel Usage Factor Adjustment Form*. The selected fuel factor for each asphalt item will remain in effect for the duration of the contract.

Failure to complete the *Fuel Usage Factor Adjustment Form* will result in using 2.90 gallons per ton as the Fuel Usage Factor for Diesel for the asphalt items noted above. The contractor will not be permitted to change the Fuel Usage Factor after the bids are submitted.

SCHEDULE OF ESTIMATED COMPLETION PROGRESS:

(7-15-08)(Rev. 1-16-24)

108-2

SP1 G58

The Contractor's attention is directed to the Standard Special Provision entitled *Availability of Funds Termination of Contracts* included elsewhere in this proposal. The Department of Transportation's schedule of estimated completion progress for this project as required by that Standard Special Provision is as follows:

	<u>Fiscal Year</u>	<u>Progress (% of Dollar Value)</u>
2024	(7/01/23 - 6/30/24)	15% of Total Amount Bid
2025	(7/01/24 - 6/30/25)	85% of Total Amount Bid

The Contractor shall also furnish his own progress schedule in accordance with Article 108-2 of the *Standard Specifications*. Any acceleration of the progress as shown by the Contractor's progress schedule over the progress as shown above shall be subject to the approval of the Engineer.

MINORITY BUSINESS ENTERPRISE AND WOMEN BUSINESS ENTERPRISE (DIVISIONS):

(10-16-07)(Rev. 1-16-24)

102-15(J)

SP1 G67

Description

The purpose of this Special Provision is to carry out the North Carolina Department of Transportation's policy of ensuring nondiscrimination in the award and administration of contracts financed in whole or in part with State funds.

Definitions

Additional MBE/WBE Subcontractors - Any MBE/WBE submitted at the time of bid that will not be used to meet the Combined MBE/WBE goal. No submittal of a Letter of Intent is required.

Combined MBE/WBE Goal: A portion of the total contract, expressed as a percentage that is to be performed by committed MBE/WBE subcontractors.

PROJECT SPECIAL PROVISIONS**ROADWAY****CLEARING AND GRUBBING - METHOD II:**

(9-17-02)(Rev. 1-16-24)

200

SP2 R02A

Perform clearing on this project to the limits established by Method "II" shown on Standard Drawing No. 200.02 of the *Roadway Standard Drawings*. Conventional clearing methods may be used except where permit drawings or conditions have been included in the proposal which require certain areas to be cleared by hand methods.

PRICE ADJUSTMENT - ASPHALT BINDER FOR PLANT MIX:

(11-21-00)(Rev. 1-16-24)

620

SP6 R25

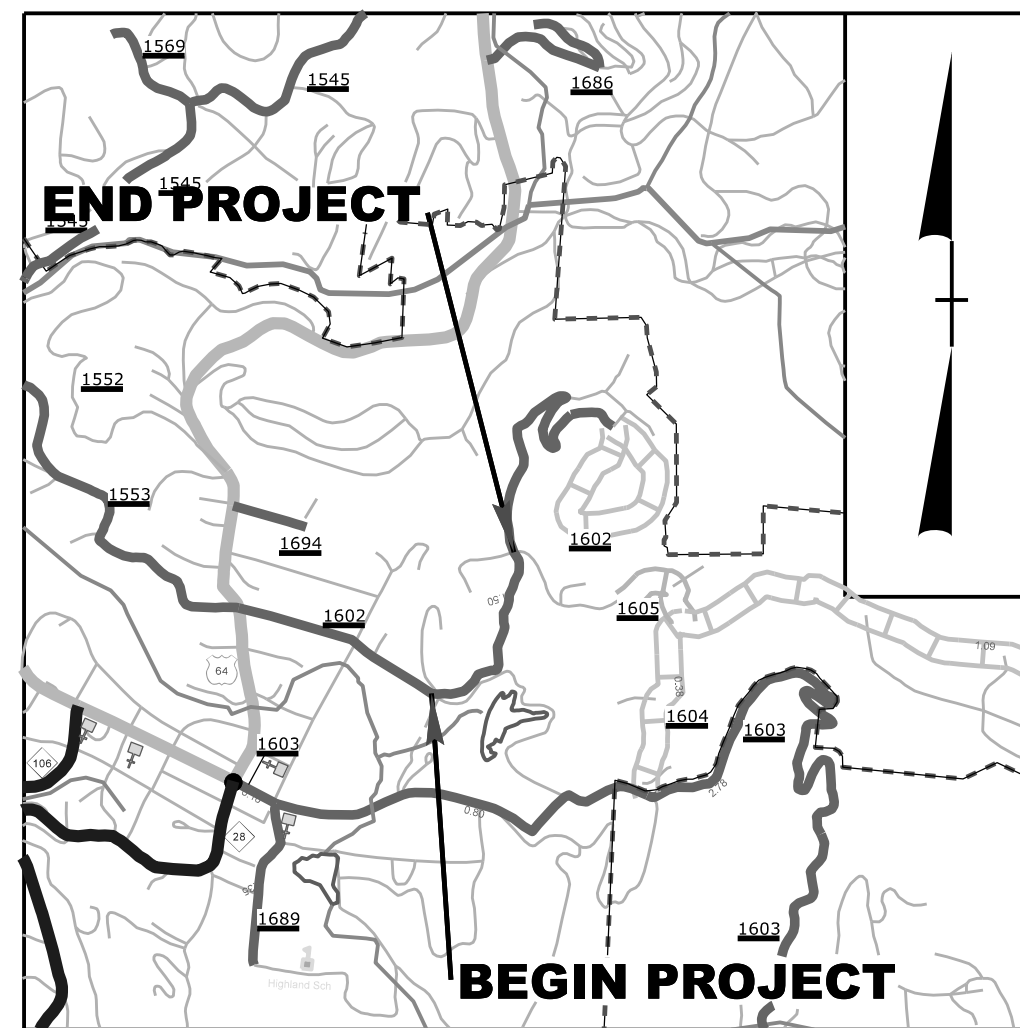
Price adjustments for asphalt binder for plant mix will be made in accordance with Section 620 of the *Standard Specifications*.

The base price index for asphalt binder for plant mix is **\$ 578.13** per ton.

This base price index represents an average of F.O.B. selling prices of asphalt binder at supplier's terminals on **January 1, 2024**.

PROJECT: 14C.056135
CONTRACT: DN01011

See Sheet 1A For Index of Sheets



VICINITY MAP (NTS)

STATE OF NORTH CAROLINA
DIVISION OF HIGHWAYS

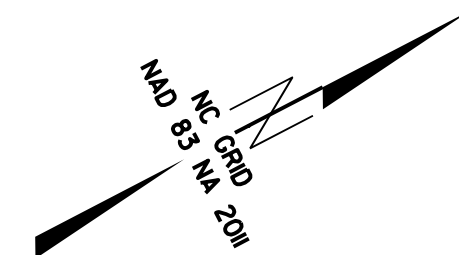
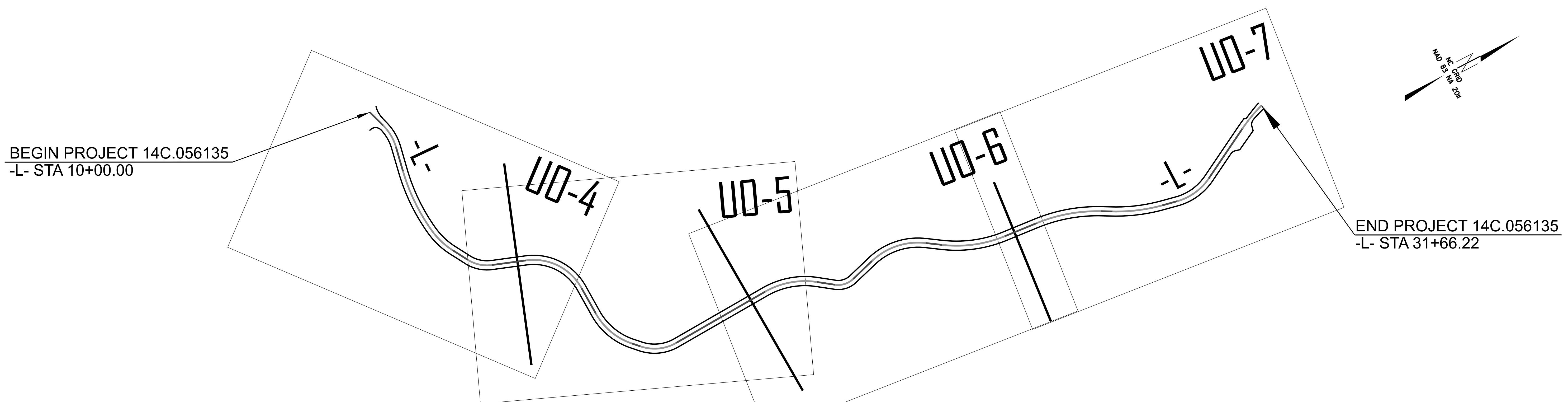
**UTILITIES BY OTHERS PLANS
MACON COUNTY**

**LOCATION: BIG BEAR PEN RD (SR 1602)
FROM CHESTNUT ST (SR 1602)
TO UPPER LAKE RD**

TYPE OF WORK: POWER DISTRIBUTION, CATV, TELEPHONE RELOCATION

T.I.P. NO.	SHEET NO.
14C.056135	UO-1

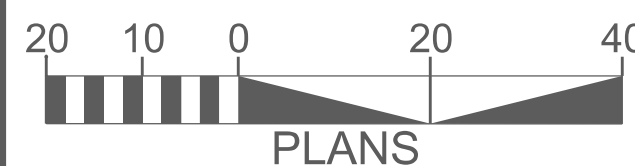
NOTE:
ALL UTILITY WORK SHOWN ON THIS SHEET WILL BE DONE BY OTHERS.
NO PAYMENT WILL BE MADE TO THE CONTRACTOR FOR UTILITY WORK SHOWN ON THIS SHEET.



**NO UTILITY IMPACTS EXPECTED
PLANS FOR REFERENCE ONLY**

DOCUMENT NOT CONSIDERED FINAL
UNLESS ALL SIGNATURES COMPLETED

GRAPHIC SCALES



INDEX OF SHEETS

SHEET NO.:	DESCRIPTION:
UC-1	TITLE SHEET
UC-4 THRU UC-7	UTILITY CONSTRUCTION SHEETS

UTILITY OWNERS

TOWN OF HIGHLANDS POWER - LAMAR NIX 828-526-2118 EXT 1102
VYVE BROADBAND - MARVIN MASHBURN 828-413-0749
FRONTIER - JERRY FISHER 828-631-4009

PREPARED IN THE OFFICE OF

DIVISION OF HIGHWAYS
253 WEBSTER RD., SYLVA NC, 28779

JESSE A. RUSSELL, P.E. PROJECT ENGINEER
GARRETT HIGDON, P.E. PROJECT DESIGN ENGINEER



DIVISION OF HIGHWAYS
DIVISION 14
253 WEBSTER ROAD
SYLVA, NC 28779

WANDA PAYNE, PE DIVISION ENGINEER
BOB GOLDING DIVISION UTILITY ENGINEER